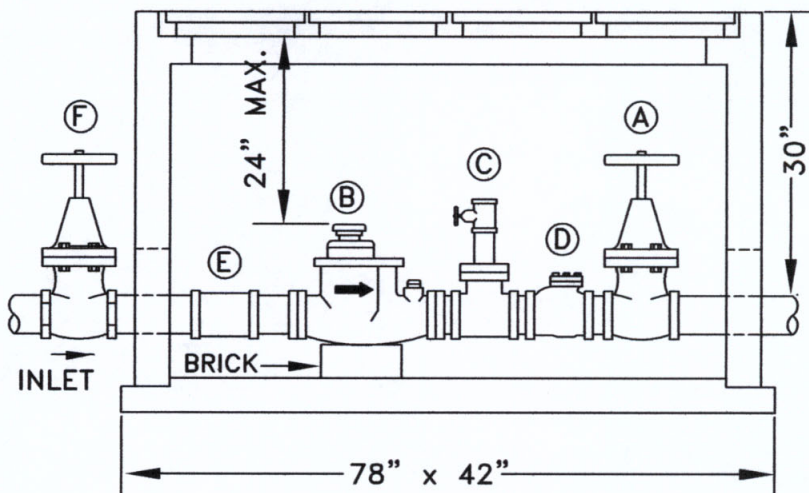


4 LARGE CASTINGS - 4" METER

- (A) 4" VALVE DOUBLE GATE IRON BODY OPEN LEFT
- (B) 4" METER WITH FLANGE CONNECTION 2" TEST TEE OF BRASS
- (C) 2" x 6" BRASS NIPPLE & 2" BRASS GATE VALVE
- (D) 4" BRASS CHECK VALVE AS PER METRO WATER (ONLY IF BACKFLOW ARE NOT AT METER BOX)
- (E) STRAINER REQUIRED WHEN TURBINE METER USED
- (F) 4" GATE VALVE WITH BOX AND CASTING

REFERENCE DETAIL AS REQUIRED FOR RADIO READ UNIT LOCATION IN FRAME AND COVER. ONLY ONE FRAME AND COVER MAYBE REQUIRED RADIO READ READY.



NOTES:

- SEE METRO GOVERNMENT ORDINANCE NO. 65-412, SEC. 39-290, PAGE 47 FOR REGULATIONS REGARDING CHECK AND RELIEF VALVES.
- METERS ARE TESTED PER AWWA STANDARD AND A SHUT OFF OF SERVICE WILL BE NECESSARY IF INTERRUPTED WATER SERVICE PRESENTS A PROBLEM WE RECOMMEND A BATTERY INSTALLATION FOR YOUR WATER METERS.

RADIO READ UNIT TO BE INSTALLED ON SERVICE LINES AS INDICATED BY METRO WATER SERVICES PERMIT OFFICE.

CONCRETE: 4500 PSI @ 28 DAYS REINFORCED WITH #4 BARS

RADIO READ UNIT TO BE INSTALLED AS PER MANUFACTURES SPECIFICATIONS.

METRO WATER SERVICES

**METER BOX FOR 4" METER
FOR 4" SERVICE**

NOT TO SCALE | DATE: 05/05/08

DWG. NO. WDET018C

METRO
WATER SERVICES

Hal Balthus
LICENSED DISTRIBUTION OPERATOR

Spitt
DIRECTOR OF WATER AND SEWERAGE SERVICES